

FXInt LD Liquid Distributors



FXInt LD-1

Splash Plate Type Distributors

A large channel provided above the distributor facilitates accurate control of the liquid flow rate. Due to large openings in the construction, it does not have tendency of plugging or choking.



FXInt LD-2

Channel Type Distributors with bottom holes

Conveniently provides liquid sealing and distributor leveling. Intermediate liquid loading. Turndown upto 2:1

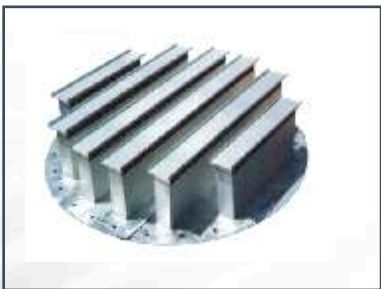


FXInt LD-3

Channel Type Distributors with tubes

Large variation in liquid loading is well taken care of in this type of distributor. Supplied in both segmented form and as one piece.

Channel Type Distributors without tubes can also be manufactured.



FXInt LD-4

Chimney Tray Collector-Distributors

For applications with very high liquid loads, when both collection and distribution of the liquid are needed, this collector-distributor is highly suitable.



FXInt LD-5

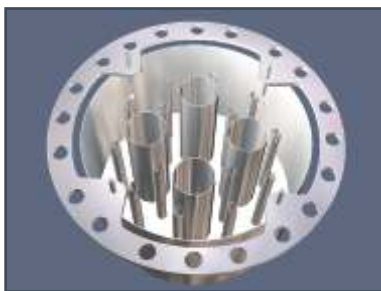
Antenna type Distributors



FXInt LD-6

Feed Pipe Distributors

Better for batch columns where liquid holdup is minimum. i.e. $< 5 \text{ m}^3/\text{m}^2\text{h}$



FXInt LD-7

Pan Type Distributor

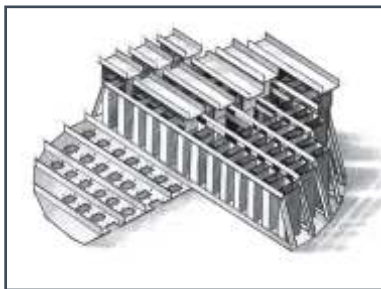
Liquid loading : 0.5 to 250 $\text{m}^3/\text{m}^2\text{h}$
 Size : 200 mm to 8.0 m



FXInt LD-8

Spray Nozzle Type Distributor

Liquid loading : 2 to 200 $\text{m}^3/\text{m}^2\text{h}$
 Size : upto 8.0 m



FXInt LD-9

Deck Type Distributor

Liquid loading : 5 to 220 $\text{m}^3/\text{m}^2\text{h}$
 Size : upto 8.0 m



FXInt LD-10

Trough Type Distributor

Liquid loading : 0.3 to 50 $\text{m}^3/\text{m}^2\text{h}$
 Size : upto 3.0 m



FENIX™

Fenix Process Technologies Pvt. Ltd.

K 6/1, Malini
Erandwane Co-op. Housing Society
Near Mangeshkar Hospital
Opp. Sevasadan School
Erandwane, Pune - 411004
India.

Tel. No.: +91 20 65008772 / 73
+91 20 32542601
Fax No.: +91 20 25458454

Email: info@fenix.in
Web: www.fenix.in